

AVAILABLE 1.41 Acres



SWC Cherry Ave. & 25th St., Signal Hill, CA 90755

Annika Riphagen

(562) 431-8734 x-114
ariphagen@pacret.com
DRE License #: 01734521

Mike Jensen

(562) 431-8734 x-110
jensen@pacret.com
DRE License #: 00885730

911 Studebaker Road
Suite 205
Long Beach, CA 90815

www.pacret.com

Creating
Real Estate
Value

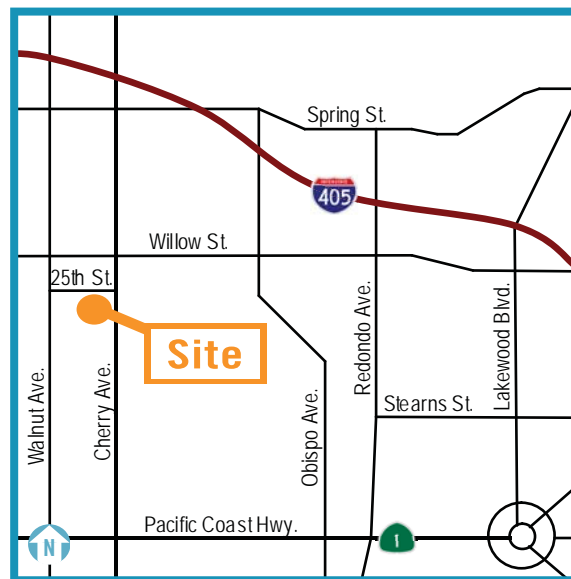


Demographics

(2010 Est.)	1 Mile	2 Mile	3 Mile	5 Mile
Population	17,979	151,598	320,112	545,603
Households	5,936	48,094	117,406	198,408
Avg. HH Income	\$61,499	\$50,776	\$60,585	\$70,046
Med. HH Income	\$50,152	\$35,619	\$42,517	\$50,100
Daytime Population	25,048	150,306	301,729	520,445

Traffic Counts

Willow St.	35,950	Source: CoStar Group Inc.
Cherry Ave.	34,660	



Scan with your
mobile device



The information above has been obtained from sources believed reliable. While we do not doubt its accuracy, we have not verified it and make no guarantee, warranty or representation. It is your responsibility to independently confirm its accuracy and completeness.

AVAILABLE 1.41 Acres



PACIFIC RETAIL PARTNERS

SWC Cherry Ave. & 25th St., Signal Hill, CA 90755

Annika Riphagen

(562) 431-8734 x-114
ariphagen@pacret.com
DRE License #: 01734521

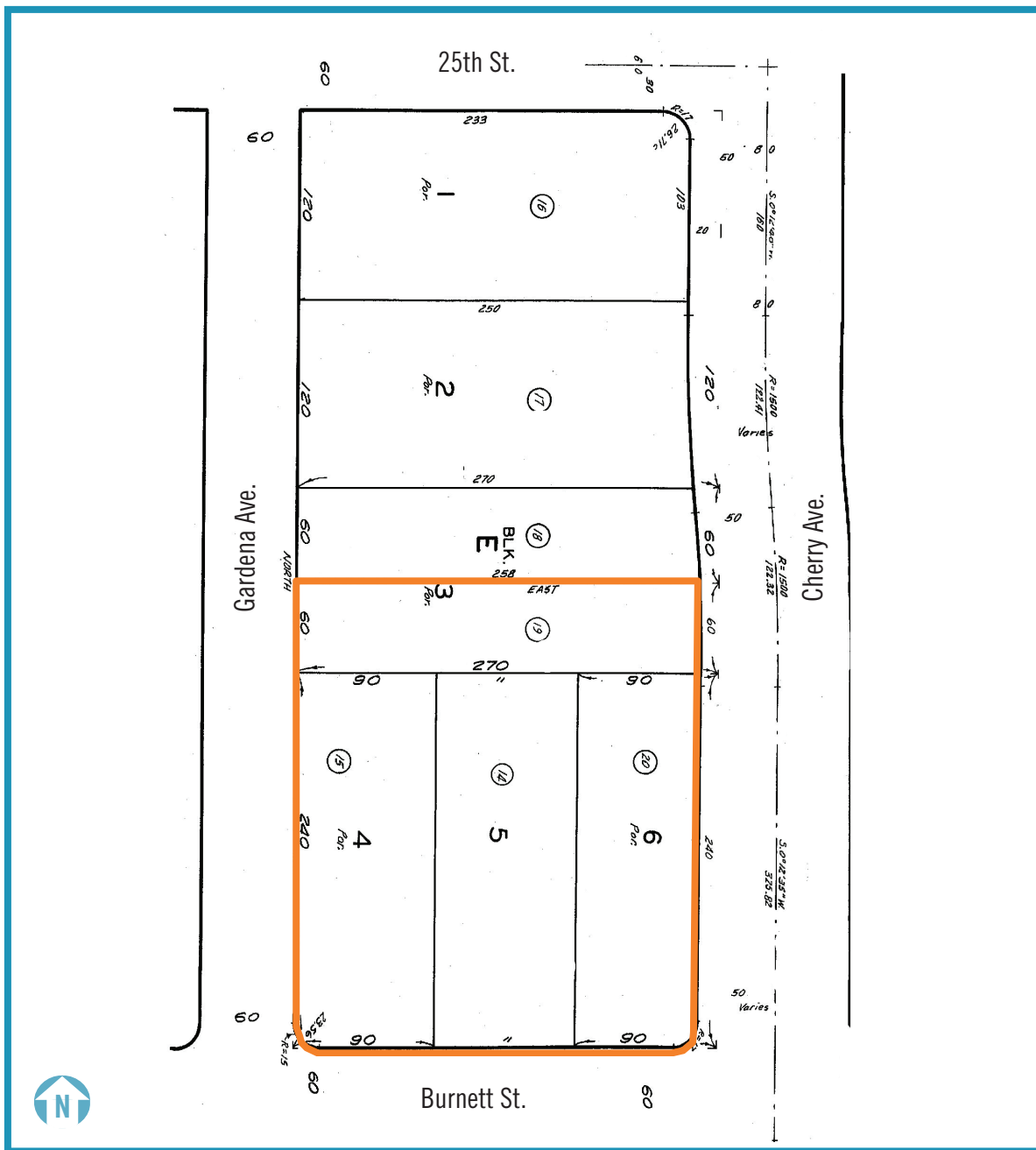
Mike Jensen

(562) 431-8734 x-110
jensen@pacret.com
DRE License #: 00885730

911 Studebaker Road
Suite 205
Long Beach, CA 90815

www.pacret.com

Creating
Real Estate
Value



Property Highlights

- New retail development anchored by Fresh & Easy
- Property is on the going home side of the best retail intersection in the trade area
- Retailers in the immediate area include: Fresh & Easy, Home Depot, Costco, Petsmart, Food 4 Less, Starbucks, McDonalds, Del Taco, Wells Fargo Bank and Subway

The information above has been obtained from sources believed reliable. While we do not doubt its accuracy, we have not verified it and make no guarantee, warranty or representation. It is your responsibility to independently confirm its accuracy and completeness.