

AVAILABLE 1,656 SF



NEC Paramount Blvd. & Del Amo Blvd., Lakewood, CA 90712

Annika Riphagen

(562) 431-8734 x-114
ariphagen@pacret.com
DRE License #: 01734521

911 Studebaker Road
Suite 205
Long Beach, CA 90815

www.pacret.com

Creating
Real Estate
Value



Demographics

(2010 Est.)	0.5 Mile	1 Mile	2 Mile	3 Mile
Population	7,016	31,913	114,294	223,746
Households	2,504	11,676	39,110	75,853
Avg. HH Income	\$84,650	\$68,831	\$66,889	\$68,347
Med. HH Income	\$76,492	\$54,561	\$51,389	\$52,250
Daytime Population	3,831	18,831	93,148	196,450

Traffic Counts

Paramount Blvd.	21,294	Source: CoStar Group Inc.
Del Amo Blvd.	34,941	



Scan with your
mobile device



The information above has been obtained from sources believed reliable. While we do not doubt its accuracy, we have not verified it and make no guarantee, warranty or representation. It is your responsibility to independently confirm its accuracy and completeness.

AVAILABLE 1,656 SF



Annika Riphagen

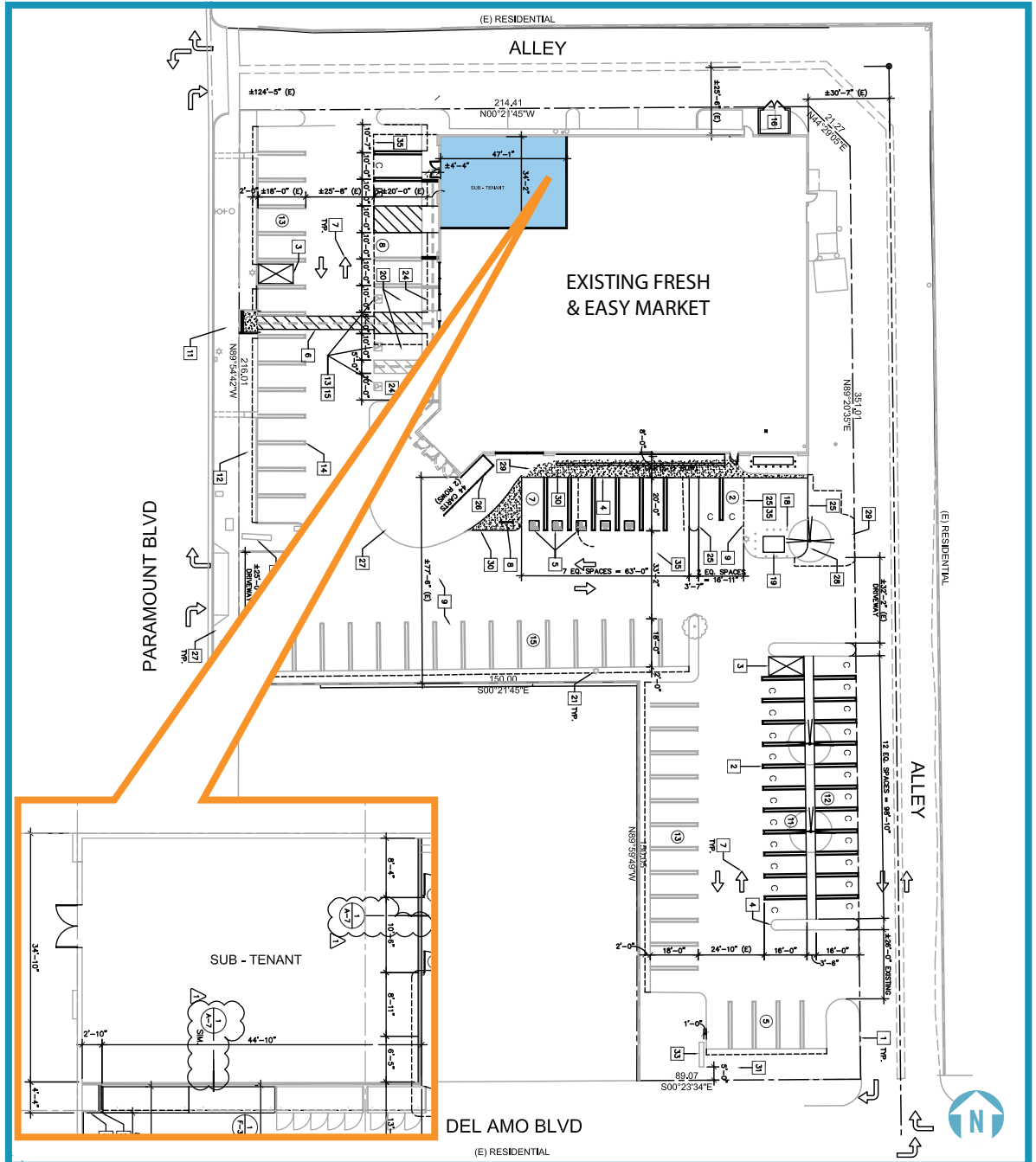
(562) 431-8734 x-114
ariphagen@pacret.com
DRE License #: 01734521

911 Studebaker Road
Suite 205
Long Beach, CA 90815

www.pacret.com

Creating
Real Estate
Value

NEC Paramount Blvd. & Del Amo Blvd., Lakewood, CA 90712



Property Highlights

- Signalized intersection
- Abundance of parking
- Available immediately

The information above has been obtained from sources believed reliable. While we do not doubt its accuracy, we have not verified it and make no guarantee, warranty or representation. It is your responsibility to independently confirm its accuracy and completeness.

