

AVAILABLE 1,656 SF



NEC Paramount Blvd. & Del Amo Blvd., Lakewood 90712

Annika Riphagen

(562) 431-8734 x-114
ariphagen@pacret.com

Brendan Cavanaugh

(562) 431-8734 x-123
bcavanaugh@pacret.com

911 Studebaker Road
Suite 205
Long Beach, CA 90815

www.pacret.com

Creating
Real Estate
Value



Demographics

(2008 Est.)	.5 Mile	1 Mile	2 Mile	3 Mile
Population	6,781	31,050	114,259	225,163
Households	2,270	10,769	36,728	71,759
Avg. HH Income	\$78,302	\$67,577	\$68,924	\$70,223
Med. HH Income	\$78,213	\$55,358	\$52,443	\$53,179
Daytime Population	433	4,114	39,398	87,647

Traffic Counts

	.5 Mile	
Paramount Blvd.	32,739	Source: City of Lakewood
Del Amo Blvd.	21,805	



The information above has been obtained from sources believed reliable. While we do not doubt its accuracy, we have not verified it and make no guarantee, warranty or representation. It is your responsibility to independently confirm its accuracy and completeness.

AVAILABLE 1,656 SF



NEC Paramount Blvd. & Del Amo Blvd., Lakewood 90712

Annika Riphagen

(562) 431-8734 x-114

ariphagen@pacret.com

Brendan Cavanaugh

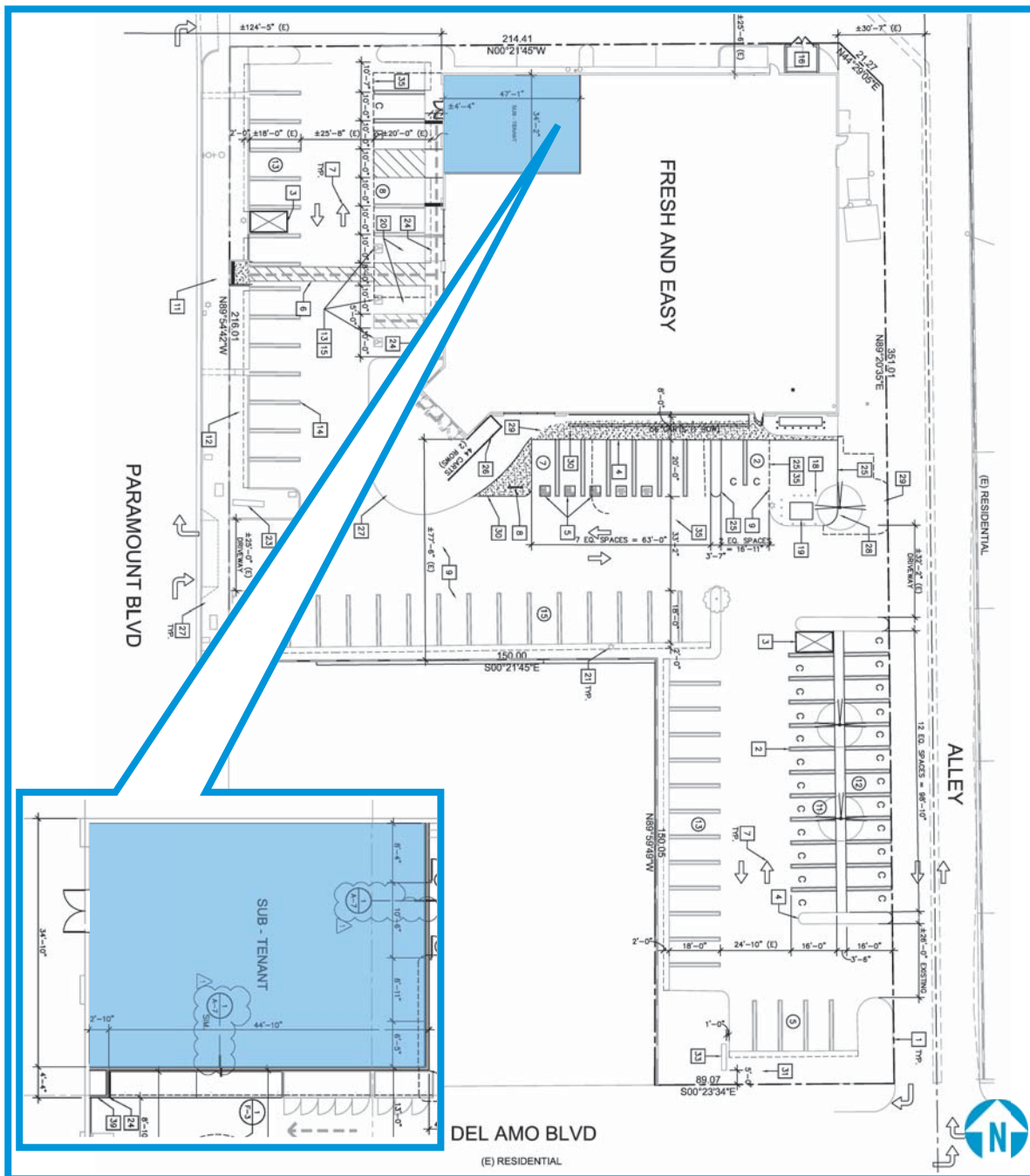
(562) 431-8734 x-123

bcavanaugh@pacret.com

911 Studebaker Road
Suite 205
Long Beach, CA 90815

www.pacret.com

Creating
Real Estate
Value



Property Highlights

- Signalized intersection
- Abundance of parking
- Available immediately

The information above has been obtained from sources believed reliable. While we do not doubt its accuracy, we have not verified it and make no guarantee, warranty or representation. It is your responsibility to independently confirm its accuracy and completeness.

